



BIM COURSES

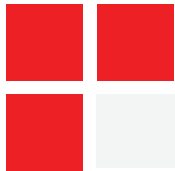
FOR MEP ENGINEERS USING AUTODESK REVIT MEP

Get trained by professionals, become a BIM Master, and grow your skills in the AEC industry

Contact Us: +91 8891007366

COURSE HIGHLIGHTS

Master Autodesk Revit MEP in our specialized BIM course tailored for MEP (Mechanical, Electrical, Plumbing) engineers. Gain expertise in modeling building systems, clash detection, and collaboration techniques. Learn to streamline MEP projects, enhance coordination, and boost your career in the AEC industry.



Master 3+ BIM software programs and industry-standard workflows.

Enhance proficiency in Building Information Modeling (BIM) skills.

Accelerate your career path within three month period, engaging in international projects.

Participate in live webinars featuring insights from industry experts.

Stimulate personal development through tailored learning experiences.

Practice BIM interview skills and refine CVs to increase job interview opportunities.

Receive comprehensive job placement assistance with a guaranteed 100% placement rate at esteemed global BIM firms.

Attain an industry-recognized certificate from BIM Cafe upon course completion.

WHAT IS REVIT MEP?

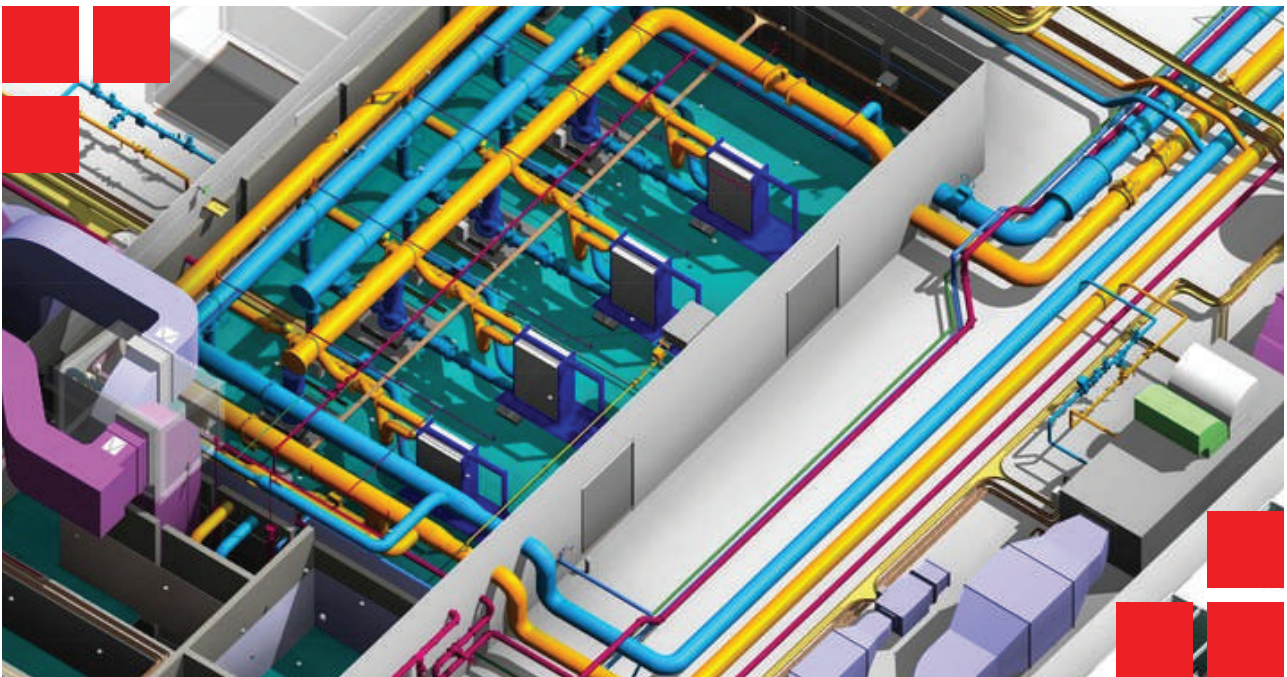
Revit MEP is a specialized tool within the Revit software suite, focusing on the design and documentation of the building systems. It allows architects, engineers, and designers to create detailed 3D models of mechanical, electrical, and plumbing systems, providing a holistic view of a building's infrastructure.



WHY CHOOSE BIM REVIT MEP?

In Architecture, Engineering, and Construction (AEC) projects, the incorporation of Revit MEP enhances:

- » Collaborative teamwork
- » Precision in design
- » Detection and coordination of clashes
- » Visualization and communication
- » Estimation and analysis of costs
- » Planning and sequencing of construction
- » Operation and maintenance of facilities
- » Analysis of sustainability and energy efficiency
- » Documentation and record-keeping



WHO CAN ATTEND OUR COURSE?

» Mechanical Engineers & Electrical Engineers
(B.E/ M Tech, B.E/B Tech, Diploma or ITI)

ABOUT US

Welcome to NEXUSD the BIM Learners, the premier project-based BIM training center nestled in Kozhikode, Kerala. Our parent company, PENCIL DEZIGN (Architecture Company) Services, situated at Hi-Lite Business park in Kozhikode is an Engineering Service provider primarily serving the Middle East and Dubai. We're deeply committed to providing top-notch education and guidance in BIM because of our vast experience managing successful global BIM projects through BIM. Whether you are an aspiring BIM professional looking to start your career or an industry a veteran seeking to upskill, Pencil Academy is your partner in achieving your goals. Join us on your journey toward becoming a proficient BIM practitioner, and let's build a smarter, more sustainable future together.

DETAILS OF REVIT MEP MASTER COURSE

This training program spans 4 months and offers an international project-based experience guided by seasoned instructors actively engaged in the field of Building Information Modeling (BIM).

TOPIC COVERED

- » Comprehensive overview of BIM and BIM LOD's (Level Of Development).
- » Introduction to various BIM software applications.
- » In-depth exploration of the BIM process, advantages of BIM, and fundamental concepts.
- » Training on analyzing and understanding contract/design drawings inputs.
- » Overview of MEPF (Mechanical, Electrical, Plumbing, Fire Protection) systems.
- » Utilization of BIM software tools for MEP modeling.
- » Parametric family creation for various MEP components, including HVAC, electrical systems, plumbing, fire protection, etc.
- » Instruction on MEP documentation, fabrication, and code compliance.
- » Practical guidance on BIM collaboration for MEP, clash detection, and coordination.
- » Insight into MEP asset management.
- » Training on cost estimation and quantity take-off using BIM.
- » One-month internship on an international MEP project with LOD 300.
- » Detailed explanation of BIM 360 functionality.
- » Specialized BIM job training and mock interviews for practical preparation.

DETAILED SOFTWARE SYLLABUS

1) Revit MEP

Revit Mechanical

Starting a mechanical project | Introduction | Starting a Revit project Adding mechanical equipment | Adding air terminals | Adding supply duct | Adding return duct | Adding duct accessories and fittings | Sizing duct | Tagging duct | Adding zones and heating and cooling loads.

Revit Electrical

Adding receptacles | Adding panels | Creating spaces | Creating a circuit | Adding lighting fixtures | Adding switches | Creating a lighting circuit | Creating a switching circuit | Creating and labeling a wiring plan | Adding conduit | Creating conduit types | Adding cable tray.

Revit Plumbing

Creating a plumbing view | Adding fixtures and domestic supply piping | Adding sanitary sloped piping | Adding equipment | Adding additional piping | Creating a system | Adding pipe accessories | Tagging items | Looking at the system browser.

Revit Fire Protection

Creating a sprinkler view | Adding sprinklers | Creating sprinkler pipe types | Modelling mains | Modelling branch lines | Adding pipe accessories | Tagging items | Adding special items | Creating a re-alarm circuit | Adding re-alarm devices.

Revit Workflow

Creating detail views | Importing CAD | Importing details | Creating sheets | Printing sheets | Creating schedules | Using phasing | Working with text | Working with dimensions | Looking at mechanical settings.

2) Navisworks Manage

Project review in Navisworks | The Navisworks file system | Navigating in a model | Working with viewpoints | The review tabs | Dealing with objects | Sorting and grouping | Clash detection.

3) AutoCAD

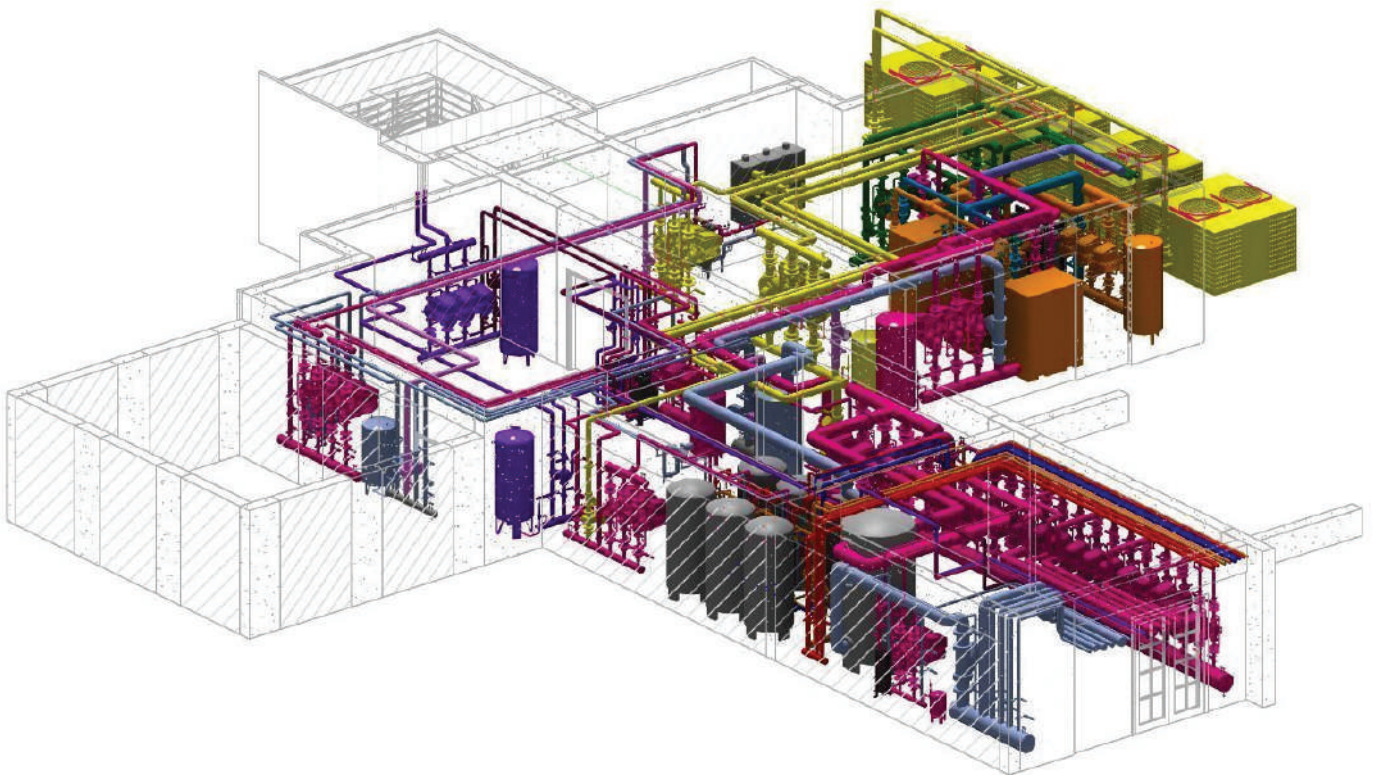
Introduction | Touring the interface Opening- Viewing & saving drawings | Creating basic geometry | Understanding drawing units | Maintaining accuracy | Using specialized drawing commands | Making primary modifications | Selecting geometry-Editing geometry | Organizing Drawings-Adding general annotations | Dimensioning | Generating and managing reusable content | Accessing specialized tools | Plotting | Creating properly sized annotations on plotted drawings | Sharing data | Conclusion.

4) Fabrication CAD MEP Basics

Introduction | User interface | CAD MEP toolbar | Manage database | Design line | CAD MEP and Revit | Annotation.

5) BIM 360

Design Collaboration | File uploading | Publishing | Managing | Acquire coordinates systems and publishing | Collaborate using BIM 360 Docs | Implement version control | Document.



PROJECT OVERVIEW

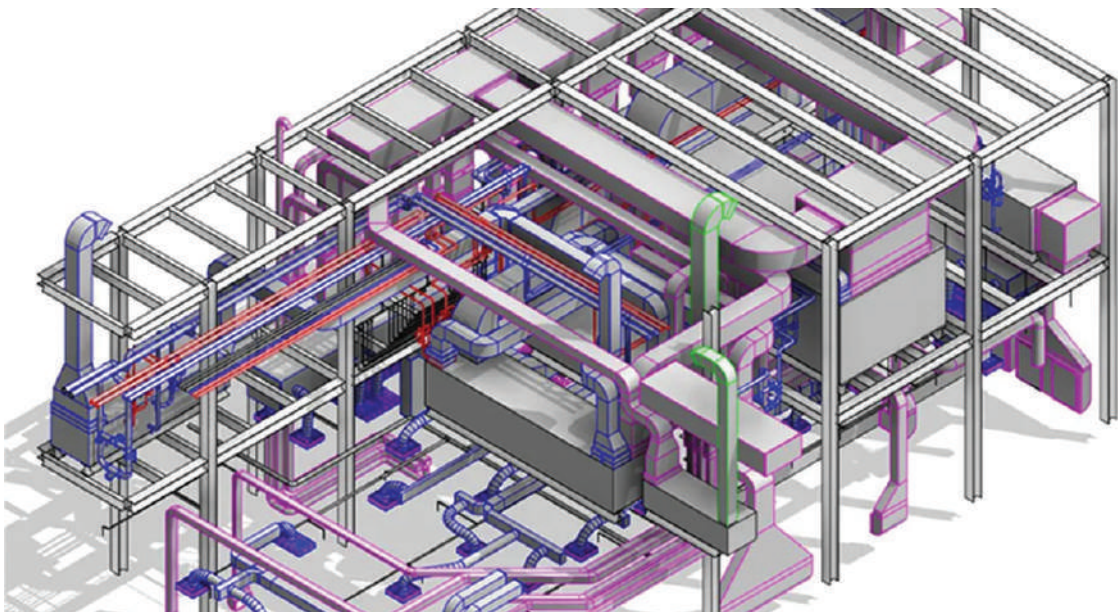
We offer international projects sourced from countries where BIM is a mandatory practice. Participation in such projects provides valuable insights into BIM standards, workflow, project setup, and MEP codes specific to different countries. Students gain hands-on experience by applying theoretical knowledge to real-world projects.

Revit MEP Master Course Highlights:

In the initial two months of our 4-month course, students learn Revit MEP while simultaneously working on live projects covering any Three services (Mechanical, Electrical, Plumbing, and Fire Protection). Following the completion of these projects, a final assignment focusing on LOD 300 will be assigned.

Additional Components of the Course:

Mock Interviews: Simulated interview sessions are integrated into the course to enhance students' readiness for real-world professional interactions.



Levels Of Development (LOD) in BIM

Levels of Development (LODs) in BIM are like turning a simple idea into a detailed plan. Starting at LOD 100 is like a rough sketch – you get the basic concept. As you move to LOD 200, 300, and beyond, it's like adding more details and specifics to your plan. Finally, at LOD 500, it's like having a superdetailed, ready-to-build blueprint for a project. So, LODs help us go from basic ideas to highly detailed plans in a step-by-step process.



CERTIFICATION

Upon successful completion of the course, candidates will receive an industry-recognized certificate from NEXUSD. Adding this certificate to your portfolio will help your possibility to get your dream job easily.

»» **Course Completion Certificate**

»» **Project Completion Certificate**



NEXUSD
The BIM Learners

GET IN TOUCH



+91 8891 007 366
+91 8960 005 588



nexusdbimlearners@gmail.com
www.nexusdbimlearners.com



2nd Floor, Hi-Lite Business Park,
Kozhikode, Kerala - 673014