

BIM COURSES

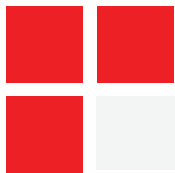
FOR ARCHITECTS & CIVIL ENGINEERS

Get trained by professionals, become a BIM Master, and grow your skills in the AEC industry

Contact Us: [+91 8891007366](tel:+918891007366)

COURSE HIGHLIGHTS

A Building Information Modeling (BIM) course typically covers a range of topics related to digital modeling and management of building projects. Here's a short description highlighting the key aspects:



Boost BIM (Building Information Modelling) skills.

Master 4+ BIM Software Programs & Industry Workflow.

Fast-Track Your Career With International Projects.

Access Live Webinars With Industry Experts.

Cultivate Personal Development.

Practive BIM Interviews & Craft Appealing CV's.

100% Job Placement Assistance

Earn The Industry - Recognized Certificate From BIM Hub.

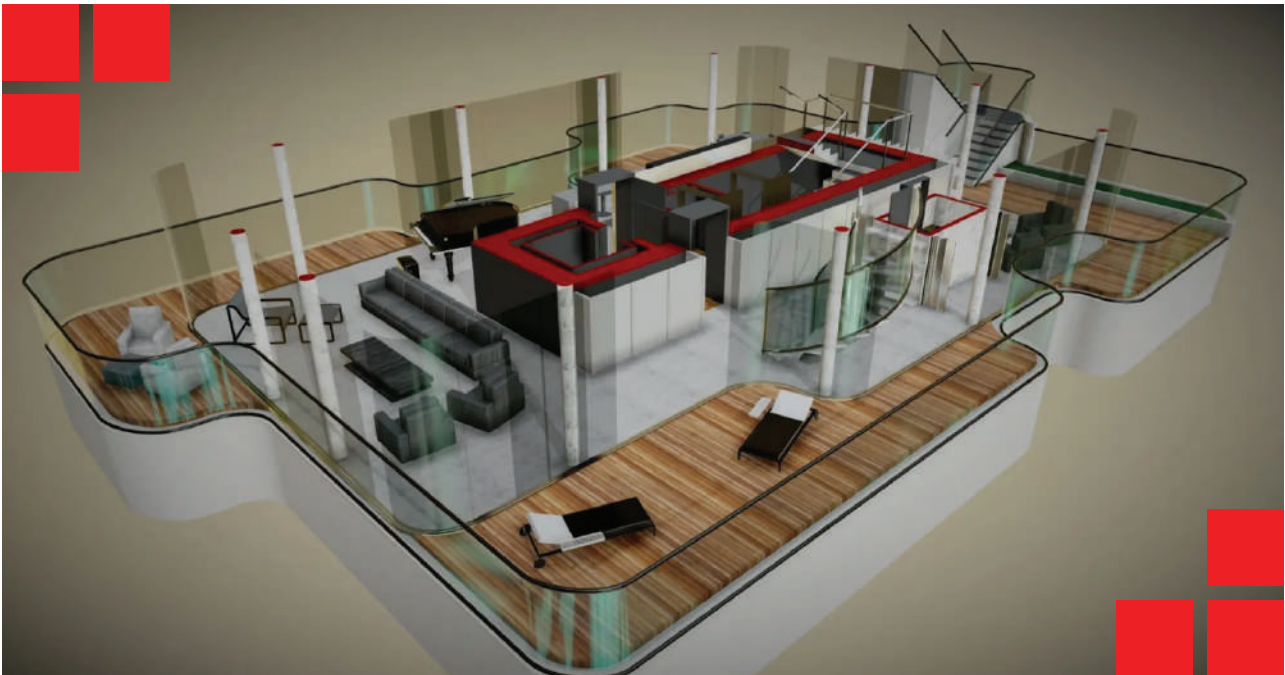
WHY CHOOSE BIM?

Students choose BIM for their careers because it helps them work smarter in construction and design. With BIM, they can use cool technology to create 3D models of buildings and collaborate better with others. It's like a high-tech toolbox that makes projects more efficient and saves money. Plus, companies really like hiring people who know how to use BIM because it makes the whole building process smoother. So, students see BIM as a great way to be tech-savvy and have a cool job in the world of construction.



IN AEC PROJECTS BIM IMPROVES

- » Team Collaboration
- » Design Accuracy
- » Clash Detection & Coordination
- » Visualization & Communication
- » Cost Estimation & Analysis
- » Construction Sequencing & Planning
- » Facility Operation & Maintenance
- » Sustainability & Energy Analysis
- » Documentation & Record-Keeping



WHO CAN ATTEND OUR COURSE?

- » Architects (B Arch / M Arch)
- » Civil Engineers (M Tech, B.E / B Tech, Diploma or ITI)
- » Interior Designers

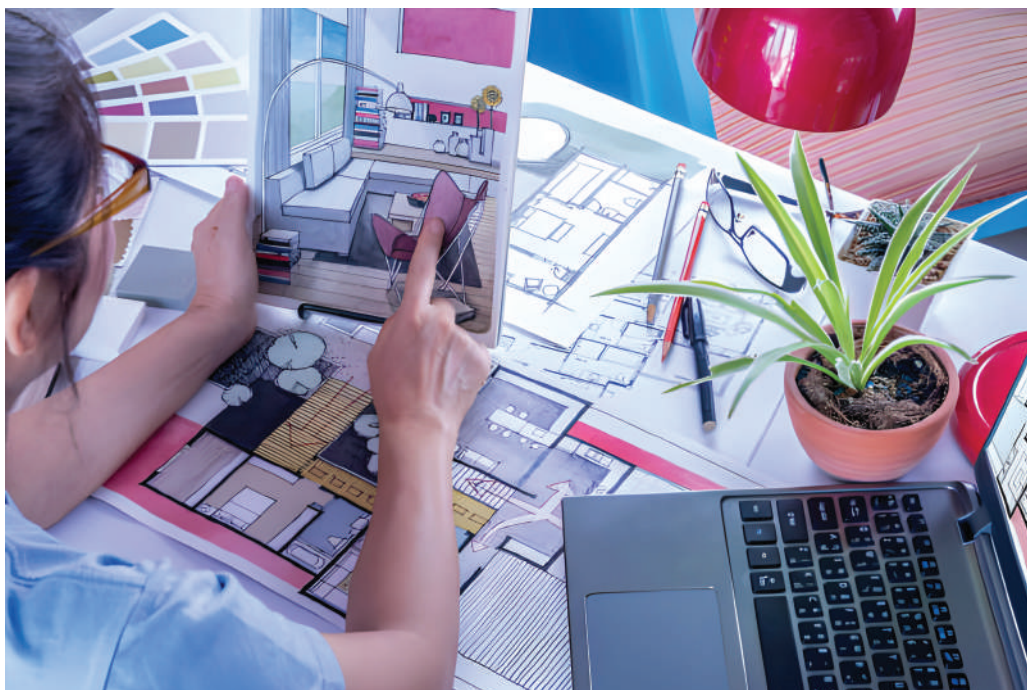
SOFTWARE & TOOLS WE TEACH



COURSE WE OFFER

» Courses For Architects & Civil Engineers

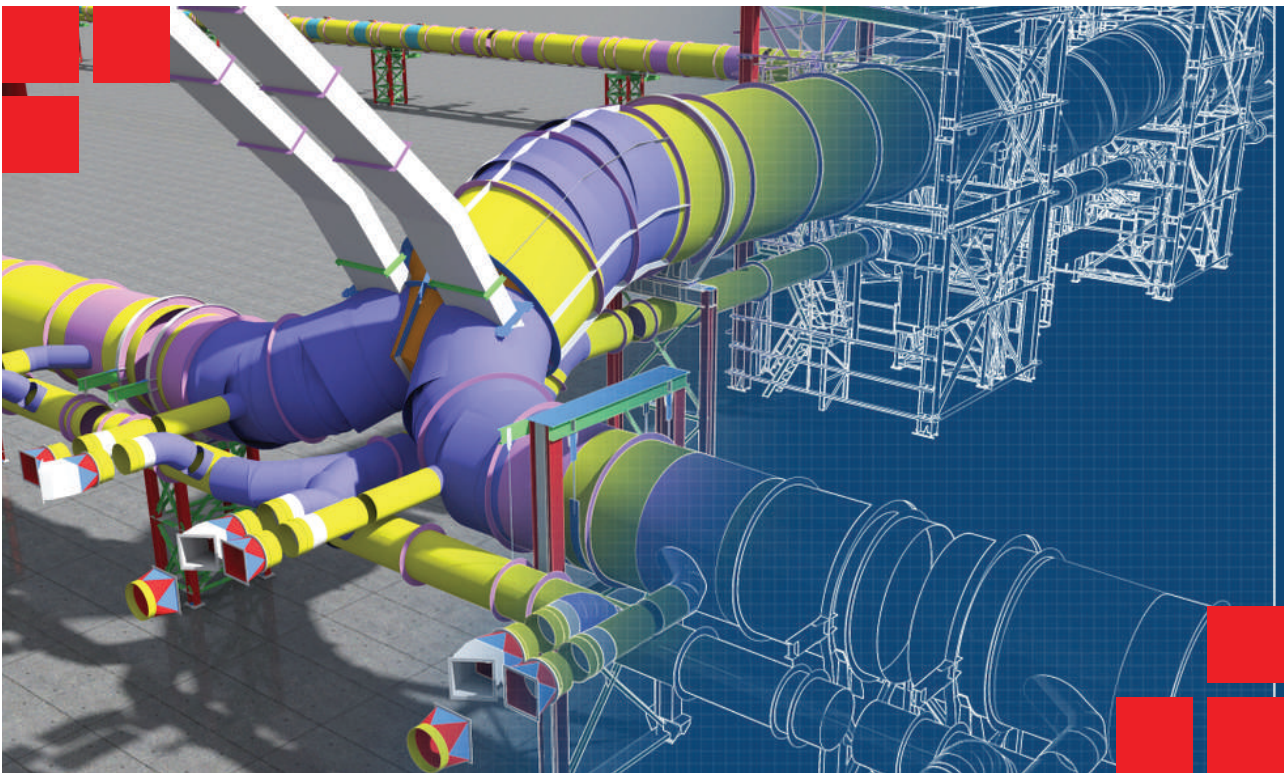
» Course For Interior Designers



ABOUT US

Welcome to NEXUSD The BIM Learners, The premier project-based BIM training center nestled in Kozhikode, Kerala. We're deeply committed to providing top-notch education and guidance in BIM because of our vast experience managing successful global BIM projects through BIM.

Whether you are an aspiring BIM professional looking to start your career or an industry veteran seeking to upskill, NEXUSD The BIM Hub is your partner in achieving your goals. Join us on your journey toward becoming a proficient BIM practitioner, and let's build a smarter, more sustainable future together.



COURSES FOR ARCHITECTS & CIVIL ENGINEERS

- 1) BIM Basic Course (1 Months)
- 2) BIM Professionals Course (4 Months)

1) BIM Basic Course (1 Months)

Topic Covered

- » Introduction to BIM
- » Introduction to BIM LOD (Level Of Development)
- » Introduction to BIM Software
- » Clash Detection & Coordination
- » International project LOD 200 (Metric Unit)
- » BIM Software & Tool Detailed Training (Arch & Structural)

Software & Tools Used

- » AUTOCAD
- » REVIT

2) BIM Professional Course (4 Months)

Topic Covered

- » Introduction to BIM
- » Introduction to BIM LOD (Level Of Development)
- » Introduction to BIM Software's, Process & Its Benefits Of BIM

Software & Tools Used

- » REVIT
- » NAVISWORKS MANAGE
- » AUTOCAD

» 3D Modeling & Visualization

» How to Read & Understand the Contract/
Design Drawings Inputs

» Parametric Family Creation

» Construction Documentation

» Cost Estimation & Quantity Take - Off

» Clash Detection & Coordination

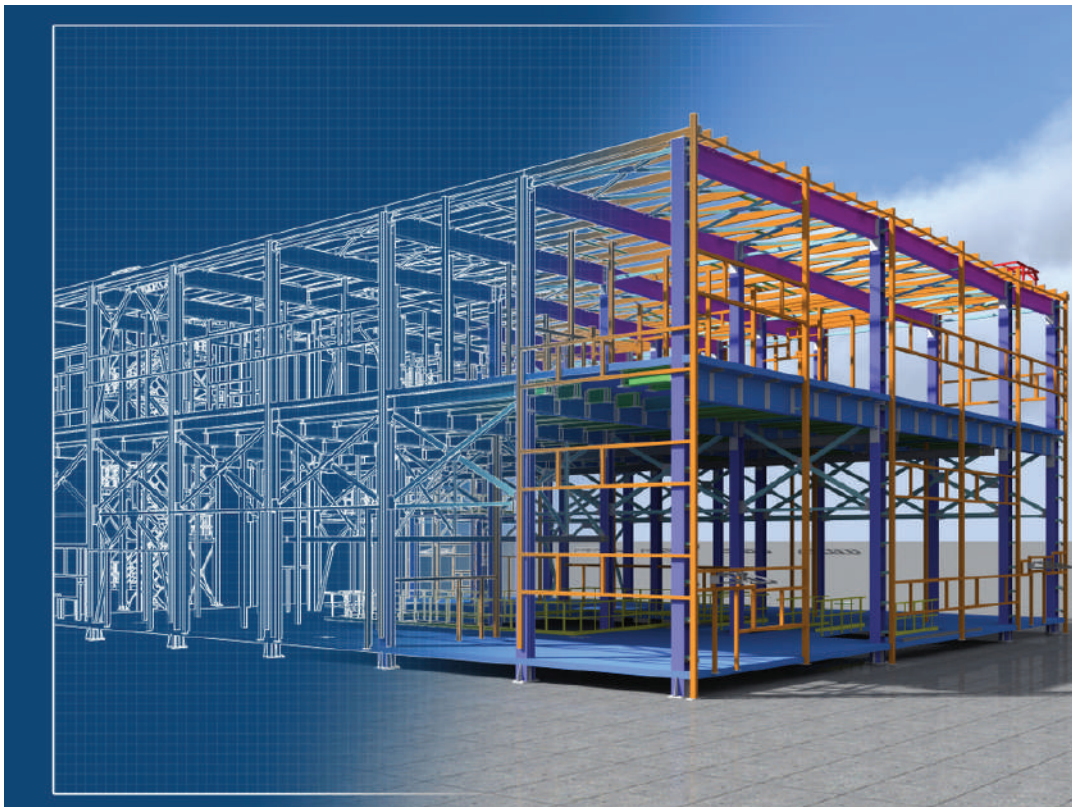
» Live International Project (Imperial & Metric) Training
(LOD 200 and LOD 300)

» Detailed BIM Software Training

» RECAP PRO

» SKETCHUP

» LUMION



COURSE PLAN

1 Months Course Plan	
Softwares	Duration(In days)
Revit Architecture	20
AutoCAD	8
Projects	
Project 1 (LOD 200)	Within 1 Month
Project 2 (LOD 300)	
Total working days	1 Months

4 Months Course Plan	
Softwares	Duration(In days)
Revit Architecture	20
Revit Structure	5
AutoCAD	10
Navisworks Manage	5
Recap Pro	3
Sketchup	6
Lumion	4
Projects	
Project 1 (LOD 200)	1 Month
Project 2 (LOD 300)	
Project 3 (LOD 350)	1 Month
Total working days	4 Months

SOFTWARE SYLLABUS

1) AUTOCAD

Introduction | Touring the interface Opening- Viewing & saving drawings | Creating basic geometry | Understanding drawing units | Maintaining accuracy | Using specialized drawing commands | Making primary modifications | Selecting geometry -Refining geometry | Organizing Drawings-Adding general annotations | Dimensioning | Generating & managing reusable content | Accessing specialized tools | Plotting | Creating properly sized annotations on plotted drawings | Sharing data | Conclusion.

2) REVIT ARCHITECTURE

Creating walls | Basic wall | Curtain Wall | Stacked Wall | Placing doors, windows and components | Family creation | Grouping & filtering | Circulation stair | Ramp | Dimensions and annotations | Creating floors, ceilings and roofs | Landscaping | Working with views | Creating project details and schedules | Preparation of sheets and plotting | link project & collaboration | Import and export | Rendering and walkthrough | Work sharing.

3) REVIT STRUCTURE

Setting up the project | Grids & columns | Foundations | Steel Framing | Floors & slabs | Reinforcing | Steel brace frames | Stairs ramps and slopes | Detailing & annotating | Schedules and tagging | Trusses | Project management | The steel tabs | Conclusion.

4) NAVISWORKS MANAGE

Project review in Navisworks | The Navisworks file system | Navigating in a model | Working with viewpoints | The review tabs | Dealing with objects | Sorting and grouping | Clash detection.

5) LUMION

Controlling the camera | Importing models | Creating camera paths | Configuring the environment | Building a realistic landscape | Lighting | Adjusting materials | Using build mode | Adding effects | Rendering videos and still photos | Creating panoramas.

6) SKETCH UP

Adjusting Sketchup settings | Creating components | Installing Sketchup plugins | Creating sweeps and revolves | Importing CAD drawings | Modelling a house | Adding walls, doors, and windows | Adding the roof | Creating textures | Applying materials to objects | Landscaping | Modelling interior details | Creating and saving styles | Creating plans and sections | Geolocating the model.

7) RECAP PRO

Understand the fundamentals of reality capture and the role of Recap Pro in the process | Import and manage point cloud data from various sources | Use Recap Pro tools for cleaning & organizing point cloud data | Create 3D models & visualizations from point clouds | Implement best practices for working with large and complex point cloud datasets | Utilize advanced features, such as registration & target-based alignment | Export data from Recap Pro for use in other Autodesk applications.

COURSE OVERVIEW

We provide opportunities to work on international projects from countries where BIM is a must-follow practice. Getting involved in these projects helps you learn a lot about BIM standards, and how projects are set up that vary from country to country. Students get practical experience by using what they've learned in real-world projects.

Highlights of the BIM Professional Course

During the first two months of our four-month course, students will dive into learning BIM. At the same time, they'll be working on projects that cover both architectural and structural services. Once these projects are done, students will take on the final project that specifically focuses on Levels Of Development (LOD)

Additional Aspects of the Course

Mock Interviews:

The course incorporates simulated interview sessions to boost students' preparedness for real-world professional interactions.

Resume Construction:

As part of the course, students receive guidance on creating impactful resumes, ensuring they present themselves effectively to potential.

Levels Of Development (LOD) in BIM

Levels Of Development (LOD) in BIM are like turning a simple idea into a detailed plan. Starting at LOD 100 is like making a rough sketch – you capture the basic concept. As you progress to LOD 200, 300, and beyond, it's like adding more details and specifics to your plan. Finally, at LOD 500, it's like having an ultra-detailed, ready-to-build blueprint for a project. So, LODs help us move from basic ideas to highly detailed plans in a step-by-step process.



CERTIFICATION

Upon successful completion of the course, candidates will receive an industry-recognized certificate from NEXUSD The BIM Learners. Adding this certificate to your portfolio will help your possibility to get your dream job easily.

»» **Course Completion Certificate**

»» **Project Completion Certificate**

»» **Autodesk Certificate**



NEXUSD
The BIM Learners

GET IN TOUCH



+91 8891 007 366
+91 8960 005 588



nexusdbimlearners@gmail.com
www.nexusdbimlearners.com



2nd Floor, Hi-Lite Business Park,
Kozhikode, Kerala - 673014